



OpenSSO in the Clouds

AWSome Atlanta
December 2008

Pat Patterson

Federation Architect

pat.patterson@sun.com

OpenSSO in the Clouds

What is OpenSSO?

How does it work?

How does OpenSSO fit with cloud computing?

SaaS – Google/Salesforce.com

Amazon EC2

The Fedlet

Call to action - Participate!

What is OpenSSO?



OpenSSO
Open Access . Open Federation

**Open Access.
Open
Federation.**

Web Single Sign-On
Access Control

Federation

SAML 2.0

WS-Federation

Web Services

ID-WSF

WS-*

SOAP

REST

OpenSSO Facts

890 project members at opensso.org

100 committers, 20 of which are external to Sun

Deployments all over the world



OpenSSO Options

OpenSSO Enterprise 8.0

A community build that has undergone **extensive manual and automated testing** by Sun Quality Assurance Engineering Team.

Delivered every 12 – 15 months

Long term support – hot patches/service packs

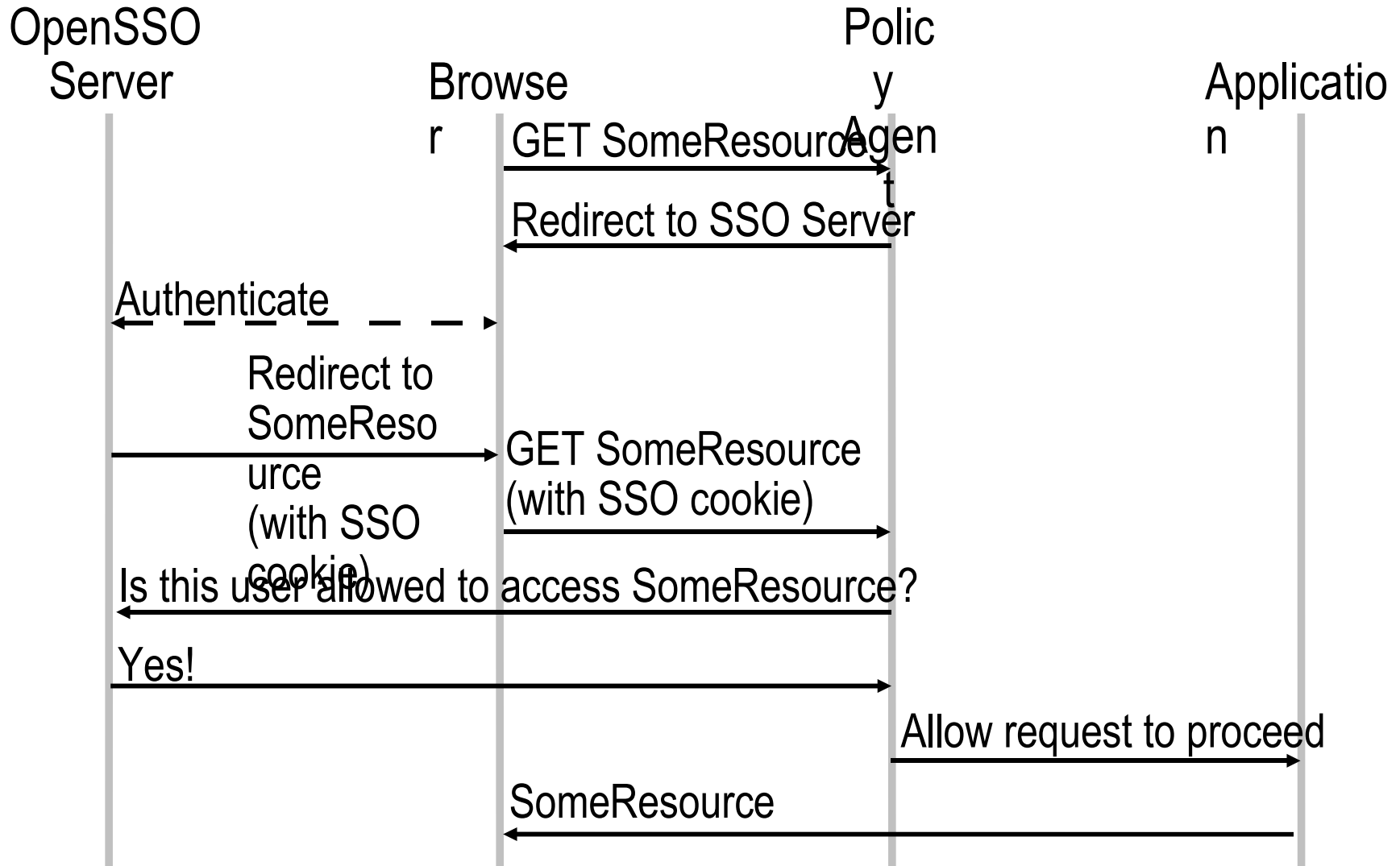
OpenSSO Express Builds

A community build that has undergone **extensive** automated testing and **moderate** manual testing by Sun's OpenSSO Quality Assurance Engineering Team.

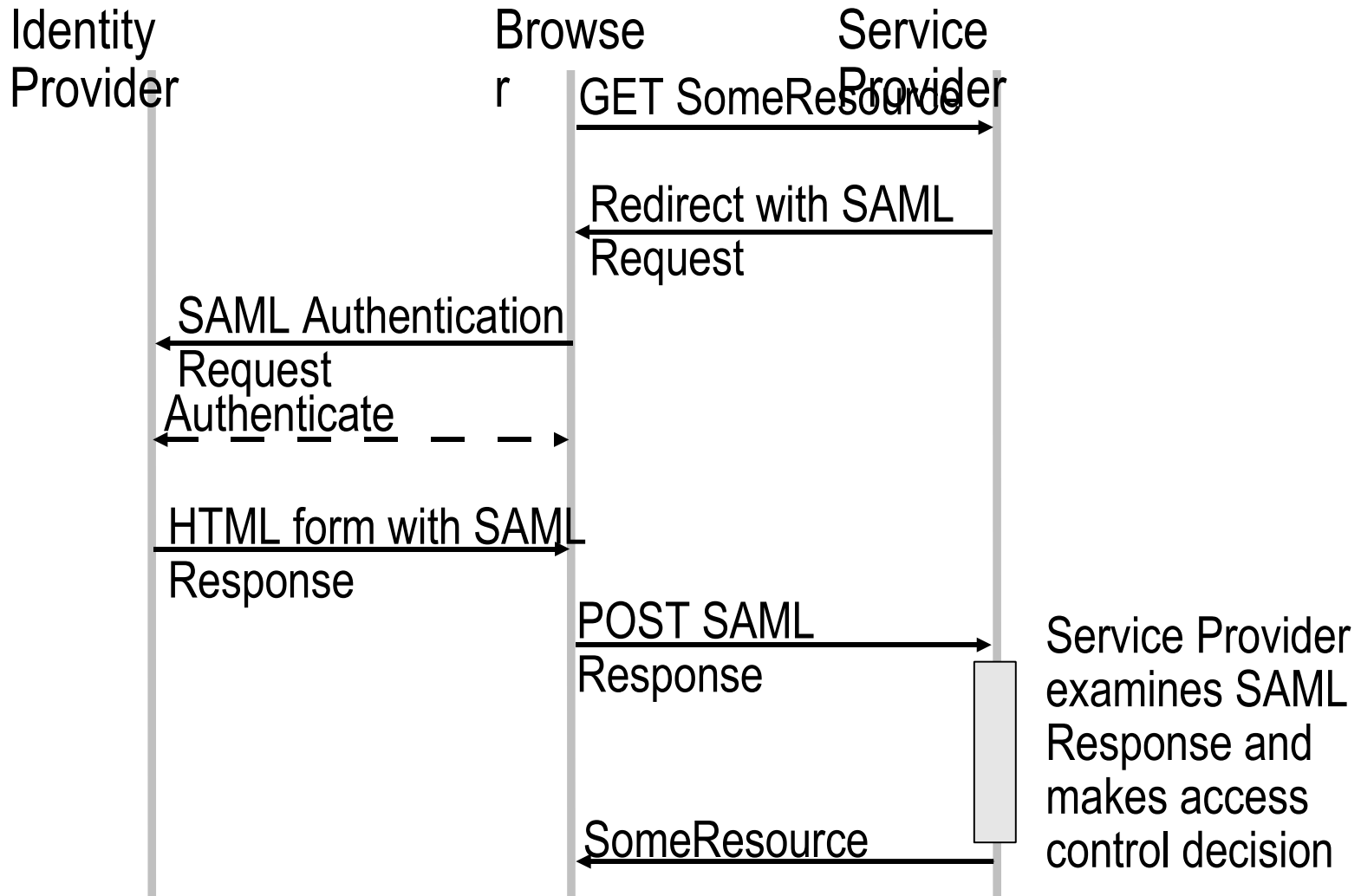
Delivered every 3 months

Fixes in the trunk

How It Works – 1: Within the Enterprise



How It Works – 2: Outside the Enterprise



Software as a Service

Google Apps

Single sign-on from an identity provider in your enterprise

Users log in with their enterprise credentials

SAML 2.0 single sign-on handshake between identity provider and Google

Salesforce.com

Same model, but slight technical differences

SAML 1.1 rather than SAML 2.0

Let's take a look...

Amazon EC2

Start with OpenSolaris EC2 instance

Glassfish pre-installed

Lots more – see <http://blogs.sun.com/ec2/>

Deploy OpenSSO WAR file

Web-based configuration

It. Just. Works.

Configure SAML 2.0 and deploy Fedlet

Next Steps

Startup script to automagically configure to the environment, instance parameters

The Fedlet

SAML 2.0-enable small service providers

Small (8.5MB) bundle of code and configuration

BIG impact!

Easy to spin up a proof-of-concept:

Deploy OpenSSO to GlassFish, configure OpenSSO, set up a SAML 2.0 identity provider, create a Fedlet, deploy the Fedlet, single sign-on...

All in less than 5 minutes!

Let's go!

Resources

OpenSSO

<http://opensso.org/>
<http://wiki.opensso.org/>

Pat Patterson's Blog

Superpatterns
<http://blogs.sun.com/superpat/>

Daniel Raskin's Blog

The Smoking Monkey
<http://blogs.sun.com/raskin/>

Participate!

Join

Sign up at
opensso.org

Download

OpenSSO 8.0

Subscribe

OpenSSO Mailing Lists
dev, users, announce

Chat

#opensso
on
freenode.net



Thank You.

Pat Patterson

pat.patterson@sun.com

